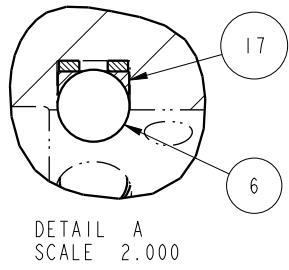
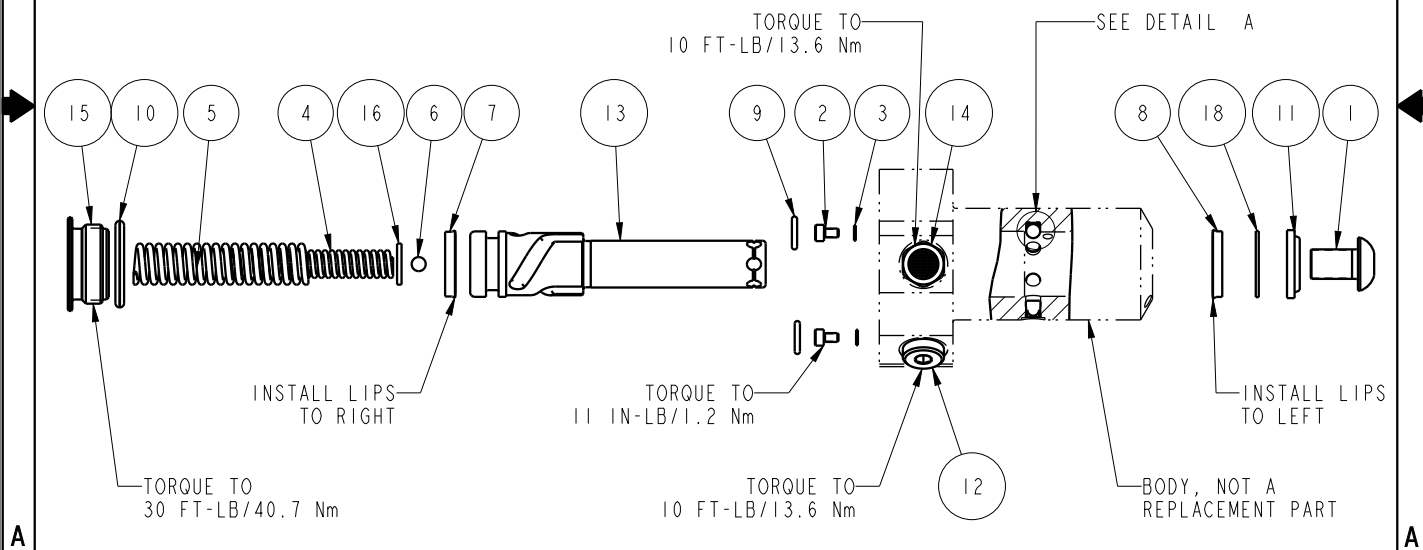


NO	QTY	PART NO	DESCRIPTION	STD SEAL KIT	FKM SEAL KIT	SPRING KIT
1	1	21500009	SCREW, CAP, BTNH, M10 X 16, ALY			
2	2	21500018	SCREW, CAP, SOCH, M3 X 5, ALY			
3	2	21500200	WASHER			
4	1	23311013	SPRING, COMPRESSION			X
5	1	23313008	SPRING, COMPRESSION			X
6	4	23600011	BALL, STEEL, ALLOY, .187	X	X	X
7	1	39010015	SEAL, BEVEL, 11/16 x 3/32 x 7/8	X	39052011	
8	1	39010020	SEAL, BEVEL W/HEEL INSERT, 5/8 x 1/8 x 7/8	X	39V10020	
9	2	39050042	O-RING, (-011)	X	39051025	X
10	1	39051031	O-RING, (-912)	X	X	X
11	1	39053001	WIPER, SNAP-IN, (5/8)	X	X	
12	1	43068004	PLUG, SOCH, G1/8			
13	1	47510903	PLUNGER, SC, HS, 4.9KN, LH			
14	1	49001904	BREATHER, 1/8 BSPP			
15	1	81400029	RETAINER, SC, HS, 1100			
16	1	81590901	DISK, PIVOT, BALL, SC, 1100, SA			X
17	3	90199957	ASSY, BALLSEAT, SC, 1100	X	X	
18	1	39F54001	BU RING, (-208 CUSTOM)	X	X	
N/A	N/A	60414302	KIT, SEAL, STANDARD			
N/A	N/A	6V414302	KIT, SEAL, FKM			
N/A	N/A	61414002	KIT, SPRING			



<b>PARTS LIST</b>	
	VEKTEK, INC. 1334 E. SIXTH AVE. P.O. BOX 625 EMPORIA, KS. 66801 U.S.A.
ASSEMBLIES AFFECTED 41420512	PARTS LIST, ASSY, SC, BF, TC, 4.9KN, SA, LH
SIZE A	MPL1430
REV C	

C	5279	RELEASE	ALS	4/22/24
REV	IN ACCORDANCE WITH ECN	EFFECTIVE DATE	REVISED BY	DATE
DRW BY:	JDW	<b>DRAWING STATUS: Released</b>		
DATE:	03/21/13	PRODUCTION APPROVED FOR RELEASED STATUS ONLY		

SHEET 1 OF 1